



Victoria Falls © African Sun

VICTORIA FALLS

The Victoria Falls are on the Zambezi River, and border the countries of Zambia and Zimbabwe. Also called Mosi-oa-Tunya (*The Smoke that Thunders*) the falls plummet 108 metres into the gorge below and are considered to be one of the seven natural wonders of the world.

Climate

The wet season in Zambia/Zimbabwe is late Nov-early May. The water levels over the Falls are highest between Feb and May, with a peak in Apr. The Falls look very dramatic at peak flood but the amount of spray makes viewing more difficult. Nov is generally the lowest water level.

VICTORIA FALLS

3 days/2 nights

Departs daily ex Victoria Falls

Tour cost per person:	Twin	Single
15 Jan-31 Dec		
Stanley & Livingstone (Luxury Suite)	\$717	\$1037
Victoria Falls Hotel (Deluxe Rm)	\$603	\$1113
Vic Falls Safari Lodge (Standard Rm)*	\$490	\$631
Victoria Falls Hotel (Standard Rm)	\$535	\$983
Ilala Lodge (Standard Rm)	\$457	\$725
The Kingdom (Standard Rm)	\$427	\$761

Special Offers

*Victoria Falls Safari Lodge - Stay 2 nights and receive a free dinner at the VFSL Boma (already reflected in tour cost).
 Bonus Offer - Stay a third night for only \$86 twin share and \$119 single share.

Price per person includes: Airport/hotel transfers, hotel accommodation on a B&B basis, tour of Victoria Falls and Boma dinner.

Children of all ages welcome at all hotels except at Stanley & Livingstone: Children 12+.

The Victoria Falls are one of the natural wonders of the world, described by the famous explorer Dr. Livingstone as “scenes so lovely they must have been gazed upon by angels in flight.” Columns of spray can be seen from miles away as 546 million cubic metres of water per minute plummets over a width of nearly 2 kilometres into a deep gorge over 100 metres below.

Day 1 Victoria Falls

Transfer from Victoria Falls airport to your hotel. This evening transfer to the Boma for dinner which includes a performance of traditional African tribal dancing.

Day 2 Victoria Falls

Early morning tour of the Falls. The afternoon is at leisure, or you can take some optional tours.

Day 3 Tour ends

Transfer to Victoria Falls airport. Tour ends.

CHOOSE FROM THE FOLLOWING:

Stanley & Livingstone

Featuring canopied beds and claw-footed bathtubs in all its 16 suites, the Stanley & Livingstone boutique hotel blends Victorian elegance with contemporary luxury. Facilities include a bar, swimming pool and an adjacent waterhole frequented by elephant and waterbuck.

Ilala Lodge

Ideally located as the closest hotel to the Victoria Falls, Ilala Lodge offers 30 standard rooms and 2 deluxe suites, each with doors leading onto open lawn or a balcony with views of the spray of the falls. The hotel features a restaurant with indoor and outdoor dining, a pool and bar.



© Rani Resorts

Stanley & Livingstone lounge



© Ilala Lodge

Ilala Lodge

Victoria Falls Safari Lodge

A testament to eco-friendly design, this 72-room lodge was created using local materials such as stone and thatch. Rooms are air-conditioned and have balconies overlooking the wildlife-rich Zambezi National Park. Highlights include on-site game viewing platforms and The Boma, which offers a unique dining and cultural experience.



© Victoria Falls Safari Lodge

Victoria Falls Safari Lodge entrance



© Victoria Falls Safari Lodge

Victoria Falls Safari Lodge Suite



© The Kingdom

The Kingdom



© African Sun

Victoria Falls Hotel Honeymoon Suite

Victoria Falls Hotel

This gracious, old-world hotel offers Edwardian grandeur and excellent service and accommodation just 10 minutes walk from the Falls. The hotel has 161 air-conditioned rooms, restaurants, entertainment, pool and other facilities.

The Kingdom

This 4 star resort hotel has a total of 294 tastefully furnished rooms and is located just a few minutes walk from the Falls. Built within the hotel the "Great Enclosure" houses several restaurants, bars, casino and pools.



© African Sun

Picturesque Victoria Falls



© African Wildlife Safaris



© Elephant Camp

Resident herd of elephants at Elephant Camp

UPPER ZAMBEZI
3 days/2 nights
Lodge

Departs daily ex Victoria Falls

Tour cost per person:	Twin	Single
Imbabala Zambezi Safari Lodge 01 Jan-31 Dec	\$572	\$894
The Elephant Camp 01 Jan-31 Dec	\$692	\$1036

Price per person includes: Imbabala: Return transfer from Victoria Falls airport, accommodation on a full board basis (excludes drinks), two game activities on each full day and an activity on arrival and departure days if time permits. The Elephant Camp: Return transfer from Victoria Falls airport, accommodation on a full board basis including local drinks (excludes premium brands), two scheduled transfers to the Falls per day and elephant interaction. Imbabala & The Elephant Camp: Children 7+.

The Upper Zambezi River between Victoria Falls and the Botswana border offers fantastic wildlife viewing on and around the Zambezi River. The river is an attraction for big game like elephant, buffalo and hippo, as well as providing a varied habitat for smaller animals.

CHOOSE FROM THE FOLLOWING:

The Elephant Camp

Imagine enjoying lazy sundowners from the comforts of your private deck as a group of habituated elephants graze nearby. The exclusive Elephant Camp offers 9 luxury tents with private plunge pool, indoor and outdoor showers and distant views of Victoria Falls. All of the activities offered at Victoria Falls are available to guests (additional cost) and free scheduled transfers to town are available from the camp.

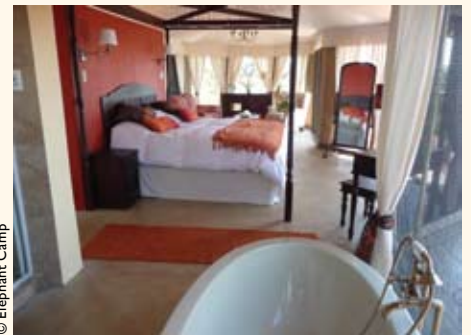
Imbabala Zambezi Safari Lodge

Set along the banks of the Zambezi each of the 8 thatched chalets have ensuite facilities and sweeping views of the river. The main lodge consists of a lounge, bar and open fronted dining room and there is a swimming pool and sundeck for relaxing during the day. The region is a haven for birdlife and the Imbabala private concession offers guests the opportunity to search for wildlife from open 4WD vehicles or explore the river by boat. Walking safaris are available on request.



© Wild Horizons

Imbabala Zambezi Safari Lodge Honeymoon Suite



© Elephant Camp

Luxurious Elephant Camp



© Wild Horizons

Exploring the Zambezi by pontoon



The Royal Livingstone © Sun International

THE SMOKE THAT THUNDERS!

3 days/2 nights
Hotels or Lodges

Departs daily ex Livingstone

Tour cost per person:	Twin	Single
The River Club, FB & Activities		
07 Jan-31 Dec	\$1188	\$1676
Tongabezi Cottages, FB		
01 Jan-31 May & 01 Nov-31 Dec	\$1100	\$1100
01 Jun-31 Oct	\$1292	\$1762
Sindabezi Chalets, FB		
01 Jan-31 May & 01 Nov-31 Dec	\$990	\$990
01 Jun-31 Oct	\$1112	\$1508
Toka Leya, FB & Activities		
07 Jan-31 Dec	\$1134	\$1552
Sussi & Chuma, FB		
06 Jan-14 Jun & 01 Nov-31 Dec	\$1116	\$1116
15 Jun-31 Oct	\$1364	\$1784
The Royal Livingstone[^], BB		
01 Jan-30 Nov	\$792	\$1442
Zambezi Sun[^], BB		
01 Jan-30 Nov	\$418	\$744

[^]Higher rates apply for stays over weekend.

Price per person includes: Return airport/hotel transfers, 2 nights accommodation in lead-in rooms, meals and activities as indicated above and a tour of the falls.

The local name for the Victoria Falls is Mosi-oa-Tunya or "The Smoke That Thunders" named after the huge clouds of mist created when the Zambezi River is at its highest and crashes into the gorge below. Livingstone is the gateway to Zambia and the Victoria Falls from the Zambian side.

CHOOSE FROM THE FOLLOWING: Zambezi Sun & Royal Livingstone

Operated by Sun International and located close to the Falls, the 3 star 212 room Zambezi Sun has an interior inspired by the colourful traditions of Zambia while the 5 star 173 room Royal Livingstone is redolent of colonial days gone by. Guests at both properties enjoy the use of a swimming pool. Children of all ages welcome.

The River Club

Upstream from the Victoria Falls is the charming River Club overlooking the Zambezi. Accommodation is in 10 luxury split level chalets with ensuite bathrooms and stunning river views.

Toka Leya

Situated 12 km upstream from the Victoria Falls, Toka Leya consists of 12 air-conditioned tents connected to the main lodge by wooden walkways. Guest tents are ensuite, with four-poster beds and fantastic views over the Zambezi. Children 6+.



© Dana Allen

The River Club



© Tongabezi

Tongabezi Bird House



© Mike Myers

Toka Leya



© Sanctuary Lodges

Luxury Sussi Lodge

Sussi & Chuma

Named after David Livingstone's faithful companions, Sussi & Chuma comprise 2 exclusive riverside houses and 12 chalets built into a canopy of live ebony trees. Located in Mosi-oa-Tunya National Park, the properties feature fine views and come complete with ensuite facilities, air-conditioning and private decks. Guests in the self-contained Chuma Houses also have a private chef. Prices on request. Children 9+.

Tongabezi & Sindabezi Island

Just 20 minutes from Livingstone on the banks of the Zambezi is the exclusive Tongabezi Lodge. There are 5 spacious ensuite cottages, and 4 very private "houses" individually decorated in a unique style, each with a sunken bath and four poster bed. Children 7+ welcome. Located on an island in the Zambezi River, luxurious Sindabezi Island Bush Camp accommodates just 10 guests in 5 open-fronted chalets. Children 14+ welcome.



© Sindabezi

Sindabezi Island Chalet

VICTORIA FALLS OPTIONAL EXCURSIONS

12-13 minutes to 1 day
Departs Victoria Falls or
Livingstone daily

Tour cost per person (Min 2):	Zimbabwe	Zambia
Flight of Angels by Helicopter [^]	\$149	\$168
Luxury Sunset Cruise [†]	\$67	\$93
Half Day Elephant Experience	\$149	\$194
White Water Rafting [^]		
Low water run full day: Aug-Jan	\$149	\$392
High water run full day: Feb-Jul	\$149	\$341
Livingstone Island Lunch		\$171
Canoe Trail [^] - Half day	\$128	\$248
Chobe NP Full Day Safari	\$223	\$223
Bungee Jumping	\$138	\$136
Zambezi Horsetrail		\$160

[^]Approx \$10-\$20 USD park fees to be paid locally.

[†]Operates with a minimum of 2 people.

Price per person includes: Small handling fee by AWS, transfers to/from hotel for your optional excursion.

EXCURSION OPTIONS

Flight of Angels

This exciting 12-13 minute joyride over the roaring falls and rushing Zambezi River will leave you breathless. It is a wonderful way to fully appreciate the incredible size of the Falls, and the awesome power of the water as it carves into the deep zig zagging gorges. Flights by Microlight aircraft are also available. Contact us for details.

Zambezi Horsetrail

Both novice and experienced riders can partake in game viewing on horseback along a wildlife-rich corridor bordering the Zambezi National Park. With the help of a knowledgeable guide, riders will follow and learn about wildlife in the area. Minimum age is 12 years.

Half Day Elephant Experience

Enjoy an unforgettable close up elephant experience, interacting with them and riding them on ancient game trails in a lush, private estate.

Livingstone Island Lunch

Livingstone Island sits at the lip of the cliff over which the Zambezi River tumbles forming Victoria Falls, and is the place where Dr. Livingstone had his first glimpse of the Falls. Only accessible during the low water season, and with a limited number of visitors allowed each day, this island picnic lunch is an exclusive



© Mike Myers

Flight of Angels over Victoria Falls

scenic experience.

Sunset Cruise (ex Victoria Falls)

The graceful Ra-Ikane riverboat is the perfect setting for cocktails while the sun slips below the horizon. Named in honour of the guide who led David Livingstone to the falls, the boat features fine teak panels, brass fittings, club chairs and a



© Mike Myers

Exhilarating rafting on the Zambezi

fully stocked bar (drinks and snacks included).

White Water Rafting

This 22km run down the rapids on the Zambezi River forms the best one-day white water rafting trip in the world. Although graded 5, the rapids are accessible by anyone who is reasonably fit and adventurous. Top quality inflatable rafts are used, each guided by a qualified oarsman, so no

experience is necessary. You must be able to swim. Minimum age is 15 years.

Canoe Trail

Paddling downstream in a canoe is probably the best way to get close up to birds and other wildlife along the river. Canoeists are accompanied by a knowledgeable wildlife expert on their adventure.

Chobe National Park Full Day Safari

Botswana's first national park, Chobe is famous for its large herds of elephant and buffalo. A full day here includes a boat safari and game drive in open vehicle to spot the park's prolific bird and wildlife. Includes lunch.

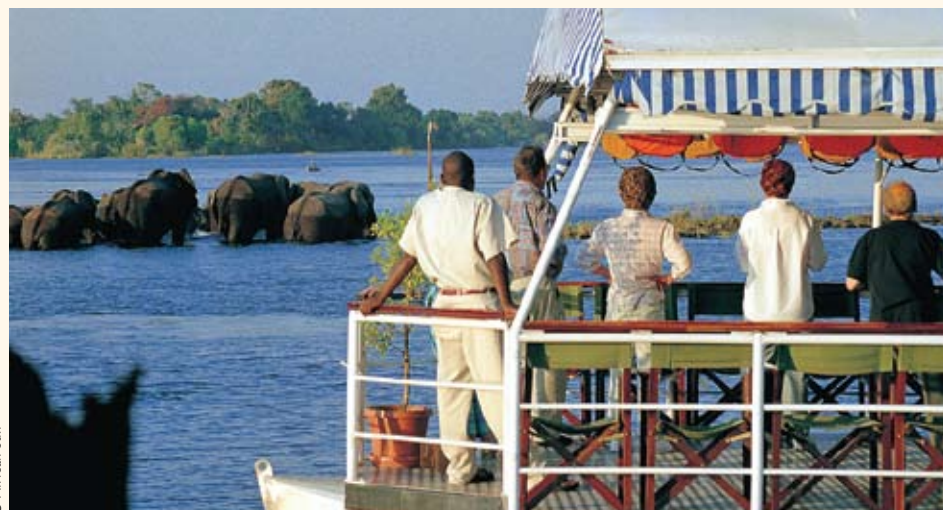
Bungee Jumping

A thrilling and unusual way to view the falls, the bungee jump is a popular adrenaline activity that takes place off Victoria Falls Bridge, which spans a gorge on the Zimbabwe-Zambia border. Jumpers



© Mike Myers

Elephant Back Safari



© African Sun

Zambezi Cruise



© Tongbezi

Livingstone Island Lunch